

Exclusive luxury villa with panoramic views in La Zagaleta

Spain, Benahavis, La Zagaleta

Villa - REF: TGS-A2908



Price: 22.000.000 €

Nº Bedrooms: 6
Private SPA
Store Room

Nº Bathrooms: 7
Sea view
Gym/Fitness

Parking
Communal lift
Cinema/tv room

M² built: 1735 m²
Private lift

M² plot: 7435 m²
BBQ

Wifi
Dishwasher

Private pool
TV

Jacuzzi
Washing machine

Exclusive luxury villa with panoramic views in La Zagaleta (UNDER CONSTRUCTION)

This new luxury villa with amazing panoramic views of the sea and mountains is designed by the famous Tobal Arquitectos.

The villa is located in one of the most picturesque and private zones of Spain - La Zagaleta, Benahavis.

Here you can enjoy the beauty of nature and not worry that someone will bother you.

This magnificent property combines luxury, modern style and innovative technologies.

We use for its construction the best materials paying special attention to the natural textures, stones and wood.

One of its features is a sliding roof in the living room which gives a feeling of infinity and spaciousness.

The villa is very spacious with more than 1 735m² of built area. It also has an enormous 7 435m² plot.

The house consists of 6 bedrooms and 11 bathrooms, and would comfortably fit your family and your guests with plenty room to spare.

The thoughtfully planned spaces include large open plan living areas, staff accommodation, gymnasium, sauna and steam room, and interior pool from which to enjoy the stunning mountain views. An exterior pool and lovely entertaining areas provide ideal outside living.







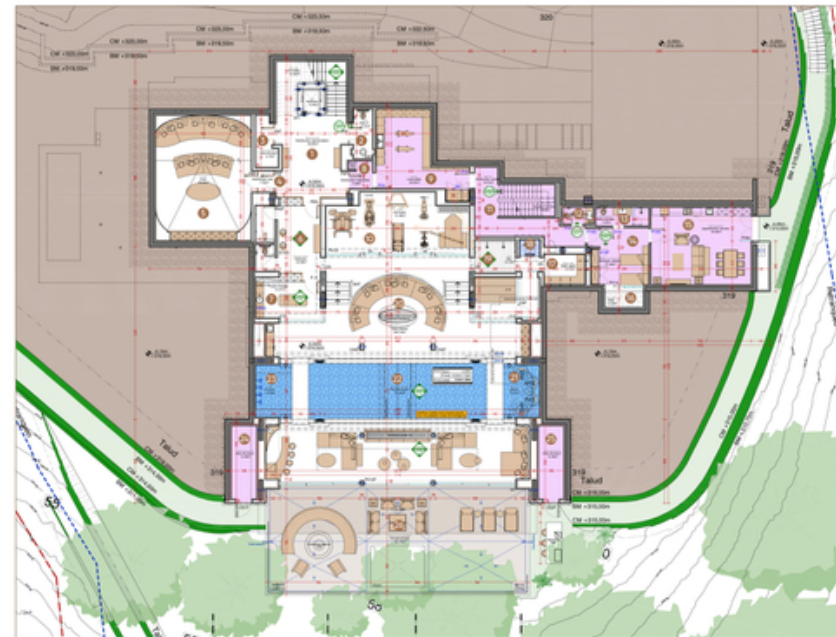






BASEMENT 1

1	Basement hall	38.80 m ²
2	Toilet 2	5.40 m ²
3	Technical room 1	5.18 m ²
4	Cinema hall	1.72 m ²
5	Cinema	62.82 m ²
6	Changing room	23.56 m ²
7	Massage room	14.40 m ²
8	Laundry hall	3.45 m ²
9	Laundry	29.30 m ²
10	Gym	41.69 m ²
11	Staff hall	18.00 m ²
12	Staff toilet	2.70 m ²
13	Staff bathroom	5.20 m ²
14	Garden storage room	17.76 m ²
15	Staff apartment	40.60 m ²
16	Courtyard	3.22 m ²
17	Steam bath	6.71 m ²
18	Cold water	1.74 m ²
19	Spa	13.74 m ²
20	Swimming pool room	202.14 m ²
21	Jacuzzi	10.30 m ²
22	Indoor Swimming Pool	51.60 m ²
23	Arts	10.25 m ²
24	Technical Room 2	10.09 m ²
25	Technical Room 3	10.09 m ²
26	Swimming Pool Terrace	11.44 m ²



FIRST FLOOR

1	Family room	31.00 m²
2	First floor hall	8.93 m²
3	Bedroom 2	35.33 m²
4	Bathroom 2	14.48 m²
5	Bedroom 3	27.44 m²
6	Bathroom 3	9.57 m²
7	Dressing 3	5.18 m²
8	Bedrooms 2 & 3 porch	27.37 m²
9	Master dressing 1	13.41 m²
10	Master dressing 2	16.14 m²
11	Master bedroom	71.50 m²
12	Master toilet	5.10 m²
13	Master bathroom	29.79 m²
14	Master bathroom porch	0.98 m²
15	Master bedroom porch	37.06 m²



BASEMENT 2

1	Technical room 4	70.89 m²
2	Indoor pool technical room	15.65 m²
3	Swimming pool compensation tank	5.63 m²
4	Technical room access	16.66 m²
5	Storage room	19.92 m²
6	Staff staircase	8.30 m²



GROUND FLOOR

1	Ground floor hall	37.54 m²
2	Dressing 4	15.15 m²
3	Bedroom 4	
4	Bathroom 4	14.41 m²
5	Bedroom 5	31.75 m²
6	Bathroom 5	14.17 m²
7	Bedrooms 4 & 5 porch	26.51 m²
8	Bedrooms 4 & 5 terrace	15.04 m²
9	Entrance hall	8.73 m²
10	Toilet 1	9.77 m²
11	Lounge dining kitchen	154.27 m²
12	Pantry	8.46 m²
13	Staff kitchen	36.85 m²
14	Entrance porch	13.93 m²
15	Staff access porch	5.22 m²
16	Parking	116.77 m²
17	Garden terrace	16.97 m²
18	Outdoor swimming pool	93.55 m²
19	Overflow	38.66 m²













